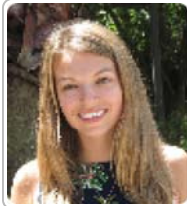


## NEURO-Neurology

### 1st Year in Residency

---



**Buchwald, Natalie [PRG 1]**  
[natalie.buchwald@neurology.ufl.edu](mailto:natalie.buchwald@neurology.ufl.edu)



**De Prey, Justin Tyler [PRG 1]**  
[Justin.DePrey@neurology.ufl.edu](mailto:Justin.DePrey@neurology.ufl.edu)



**Farooqui, Amreen Banu [PRG 1]**  
[Amreen.Farooqui@neurology.ufl.edu](mailto:Amreen.Farooqui@neurology.ufl.edu)



**Lin, Hsin-Pin [PRG 1]**  
[hsin-pin.lin@neurology.ufl.edu](mailto:hsin-pin.lin@neurology.ufl.edu)



**Patel, Mitesh [PRG 1]**  
[mitesh.patel@neurology.ufl.edu](mailto:mitesh.patel@neurology.ufl.edu)



**Rainey, Anthony [PRG 1]**  
[anthony.rainey@neurology.ufl.edu](mailto:anthony.rainey@neurology.ufl.edu)



**Yu, Jun [PRG 1]**  
[jun.yu@neurology.ufl.edu](mailto:jun.yu@neurology.ufl.edu)

### 2nd Year in Residency

---



**Ballur Narayana Reddy, Varalakshmi [PRG 2]**  
**Categorical**  
[varalakshmi.ballurnarayanareddy@n...](mailto:varalakshmi.ballurnarayanareddy@n...)



**Ferng, Amy Da-Zen [PRG 2]**  
[amy.ferng@neurology.ufl.edu](mailto:amy.ferng@neurology.ufl.edu)



**Kiviat, David Mark [PRG 2]**  
[david.kiviat@neurology.ufl.edu](mailto:david.kiviat@neurology.ufl.edu)

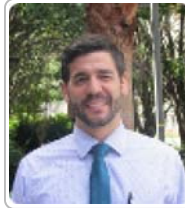


**Martin Paez, Yosbelkys [PRG 2]**  
**Categorical**  
[yosbelkys.martinpaez@neurology.ufl...](mailto:yosbelkys.martinpaez@neurology.ufl...)

2nd Year in Residency - cont.



**Morris, Michael Douglas** [PRG 2]  
[michael.morris@neurology.ufl.edu](mailto:michael.morris@neurology.ufl.edu)



**Newcomer, Zachary Mark** [PRG 2]  
[zachary.newcomer@neurology.ufl.edu](mailto:zachary.newcomer@neurology.ufl.edu)



**Rempe, Torge** [PRG 2]  
[torge.rempe@neurology.ufl.edu](mailto:torge.rempe@neurology.ufl.edu)



**Smith, Christine Nicole** [PRG 2]  
[christine.smith@neurology.ufl.edu](mailto:christine.smith@neurology.ufl.edu)



**Viswanathan, Vyas Tenkasi** [PRG 2]  
[vyas.viswanathan@neurology.ufl.edu](mailto:vyas.viswanathan@neurology.ufl.edu)

3rd Year in Residency



**Anderson, Ashley Elise** [PRG 3]  
[ashley.anderson@neurology.ufl.edu](mailto:ashley.anderson@neurology.ufl.edu)



**Broderick, Matthew**  
 [Chief Resident]  
[matthew.broderick@neurology...](mailto:matthew.broderick@neurology.ufl.edu)

Chief



**Ho, Kwo Wei David** [PRG 3]  
[KwoWei.ho@neurology.ufl.edu](mailto:KwoWei.ho@neurology.ufl.edu)



**McAdams, Matthew Thomas** [PRG 3]  
[matthew.mcadams@neurology.ufl.edu](mailto:matthew.mcadams@neurology.ufl.edu)



**Wong, Joshua** [PRG 3]  
[joshua.wong@neurology.ufl.edu](mailto:joshua.wong@neurology.ufl.edu)